



Inherit the Wind



Guys and Dolls



Ruthless!

State Champion 2007 One-Act Play
District 5A
Best Actor in Texas 5A, 2007
Best Actress in Texas 5A, 2007
Samuel French Acting Award Texas 5A, 2007

SOME PAST PRODUCTIONS

- | | |
|--|-----------------------------------|
| <i>Ruthless!</i> | <i>Medea</i> |
| <i>Tartuffe</i> | <i>Marat / Sade</i> |
| <i>Suddenly Last Summer</i> | <i>Hamlet</i> |
| <i>All My Sons</i> | <i>Of Mice and Men</i> |
| <i>The Crucible</i> | <i>The Miracle Worker</i> |
| <i>A Piece of My Heart</i> | <i>Romeo and Juliet</i> |
| <i>Baby with the Bathwater</i> | <i>The Little Foxes</i> |
| <i>Waiting for Godot</i> | <i>On the Verge</i> |
| <i>Alice In Wonderland</i> | <i>Vanities</i> |
| <i>Dylan</i> | <i>Playing for Time</i> |
| <i>The Laramie Project</i> | <i>Antigone</i> |
| <i>Dracula</i> | <i>After The Fall</i> |
| <i>Our Town</i> | <i>Twelfth Night</i> |
| <i>The Elephant Man</i> | <i>The Dairy of Anne Frank</i> |
| <i>The Children's Hour</i> | <i>The Caucasian Chalk Circle</i> |
| <i>The Marriage of Bette And Boo</i> | |
| <i>The Importance of Being Earnest</i> | |
| <i>A Midsummer Night's Dream</i> | |
| <i>Les Liaisons Dangereuses</i> | |
| <i>The Effect of Gamma Rays on Man-in-the-Moon Marigolds</i> | |



FORMER STUDENTS

Former students have furthered their theatre education at New York University, Emerson, UCLA, University of North Carolina, Julliard, Duke, Webster, Marymount Manhattan, University of Oklahoma, Oklahoma City University, University of Texas, Texas State University, Sam Houston, American Academy of Dramatic Art New York, Brigham Young University and many others.

Temple High School graduates are working professionally in New York, Chicago, Boston and Los Angeles.



Birdie

The program that Mrs. Tolleson runs at Temple is among the best high school theatre programs in the country. I didn't realize this until I was a theatre student at UCLA and found myself to be ahead of my peers in knowledge, experience and work ethic as a result of what I gained in high school. She works harder than any teacher I've ever had at any level and truly cares not only about how her students succeed in theatre (and they do), but also about how they develop as people and individuals. I'm now a professional actor in New York and still find myself relying on the foundation of knowledge and skills I gained in high school, and don't doubt for a second that Mrs. Tolleson is the number one reason for my successes, both as a professional and as a person.

— Robert Bastron

Natasha Tolleson

Temple High School Theatre Department

415 North 31st Street • Temple, TX 76504

Office 254-215-7036 • natasha.tolleson@tisd.org

Thespian Troupe website — www.ThespiansR.us

JANUARY 2008

MUSICALS

- | | |
|-------------------------------|-----------------------------|
| <i>West Side Story</i> | <i>Camelot</i> |
| <i>Seussical the Musical</i> | <i>Guys and Dolls</i> |
| <i>Li'l Abner</i> | <i>A Christmas Carol</i> |
| <i>Anything Goes</i> | <i>The Wiz</i> |
| <i>Little Shop of Horrors</i> | <i>Bye, Bye Birdie</i> |
| <i>Schoolhouse Rock</i> | <i>Hello, Dolly!</i> |
| <i>Oklahoma!</i> | <i>Bat Boy: The Musical</i> |
| <i>The Music Man</i> | <i>Zombie Prom</i> |
| <i>Grease</i> | <i>How to Succeed</i> |



The Music Man



Alice in Wonderland



Anything Goes



Baby with the Bathwater



Camelot



The Crucible



Tartuffe



Piece of My Heart



The Wiz

COURSES OFFERED

- Introduction to Theatre
- Acting 1-3
- Directing 1-3
- Dramatic Design 1-4
- Stagecraft 1-4
- Children's Theatre 1-3
- Dramatic Literature World Survey
- Dramatic Literature 20th Century
- Theatre Production 1-4

ONE-ACT PLAY

- U.I.L. Annual Competition
- District Advancement 1993-2007
- Area Advancement 1999-2004, 2007
- State Alternate 2004
- 2nd Place 5A State 2000
- State Champion Division 5A 2007



Seussical the Musical

THE FACILITY

The facility, which includes a 52'x40' proscenium stage with a 1600-seat house, is being renovated during 2008-09 thanks to a voter-approved \$3.7 million bond package. The renovation includes seating, stage rigging, draperies, lighting system, lighting instruments, automated lighting instruments and digital sound system. Plans also include an electroacoustic architecture system to provide optimal acoustics for any performance in the facility. Additions to the building include a new scene shop, new dressing and make-up rooms and increased storage.



Li'l Abner

THESPIAN TROUPE

- Troupe #1966 International Thespian Society
- Invited to perform for International Festival, 2004 & 2007
- Named Texas All-Star Thespian Troupe 2003, 2005, 2005, 2006, 2007
- Advanced to International Festival with
 - Duet Acting 2003, 04, 05, 06, 07, 08
 - Set Design 2003, 04, 05, 07, 08
 - Publicity 2004, 05, 06, 07, 08
 - Costume Design 2005, 06, 07, 08
 - Duet Musical 2005, 06, 07
 - Solo Musical 2005, 06, 07



Students have received several Thespian Scholarships
International Winner Set Design 2004

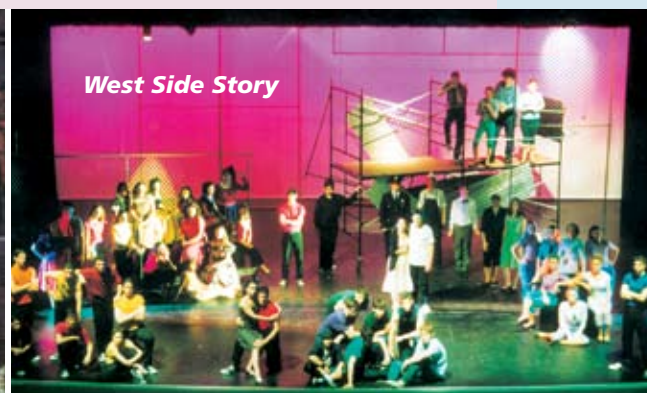
After performing in my first show at Temple High, I got what is commonly known as the "acting bug," but what I never anticipated was the knowledge and appreciation I would have for all forms of theatre when I graduated. By the time I went to Emerson College in Boston, I was surprised to find how my high school training had given me such a huge head start over many other theatre majors. Natasha Tolleson and her program are the reasons I am a working actor today. It is the one gem that sets Temple High apart from other schools, and it is the reason I have a passion and a life today!
 — Anne Adams, Steppenwolf Theatre Company

The Temple High Theatre Department instilled within me a passion for theatre. I learned what it was to work on and perform something that is true, real and important.
 — Paul Brindley, Emerson College Graduate

Having retired from teaching theatre for many years, I couldn't have picked a better place to settle than Temple because it's here that Natasha Tolleson teaches and directs the best high school theatre around. Her students are exposed to more theatre than those in most colleges, and graduate on to some of the best colleges in America. Anyone not afraid of hard work won't find a better place or a more knowledgeable and helpful colleague.
 — Ray von Rosenberg



A Christmas Carol



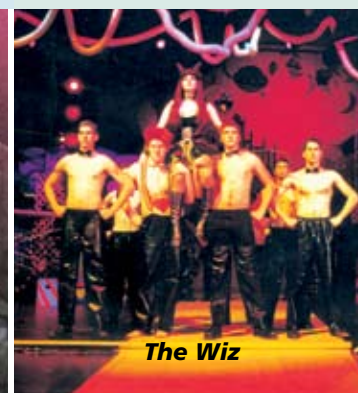
West Side Story



Bette & Boo



The Trojan Women



The Wiz



Anything Goes



The Insanity of Mary Girard